



GAT MONTHLY MEMBERSHIP PROGRESS REPORT

Results as of: 2/28/2022

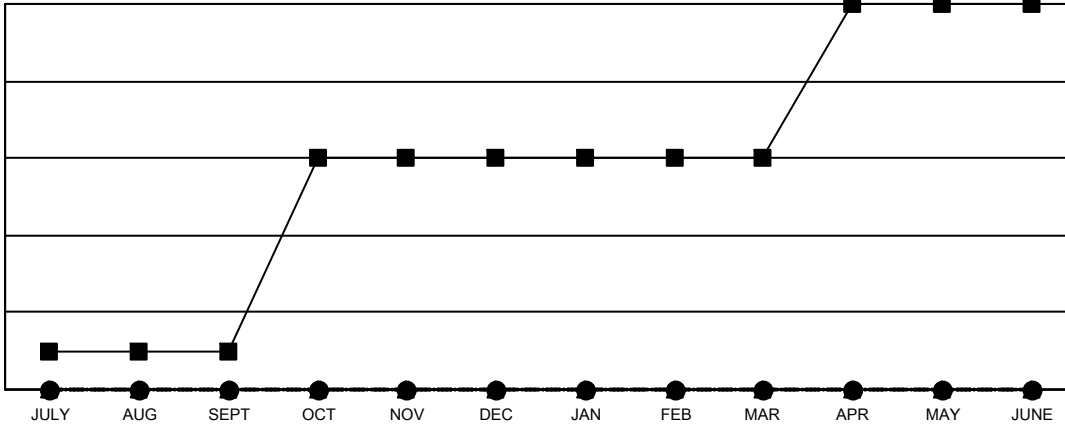
Multiple District 26

LOCATION: MISSOURI

| Clubs | | | |
|-----------------------|---------------|-----------|---------------|
| RESULTS FOR 2021-2022 | | | |
| QUARTER | NEW CLUB GOAL | NEW CLUBS | DROPPED CLUBS |
| JULY/AUG/SEPT | 1 | 0 | 1 |
| OCT/NOV/DEC | 5 | 0 | 6 |
| JAN/FEB/MAR | 0 | 0 | 0 |
| APR/MAY/JUNE | 4 | 0 | 0 |

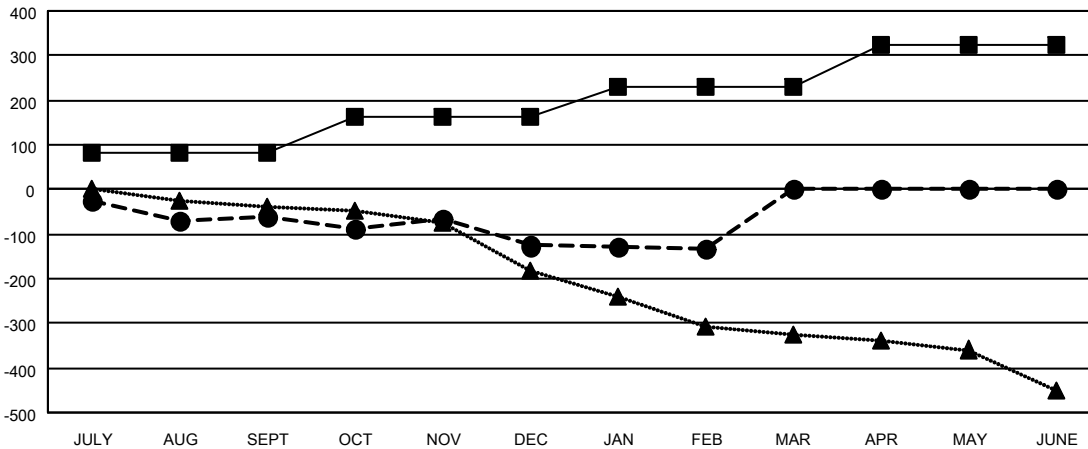
| Members | | | |
|-----------------------|------------------------|----------------------|--|
| RESULTS FOR 2021-2022 | | | |
| QUARTER | MEMBER GROWTH NET GOAL | MEMBER GROWTH ACTUAL | DROPPED MEMBERS ACTUAL (including transfers) |
| JULY/AUG/SEPT | 83 | 199 | 232 |
| OCT/NOV/DEC | 79 | 167 | 217 |
| JAN/FEB/MAR | 68 | 104 | 91 |
| APR/MAY/JUNE | 94 | 0 | 0 |

GOALS AND ACTUAL NEW CLUBS CUMULATIVE



- CURRENT YEAR GOALS FOR NEW CLUBS
- CURRENT YEAR ACTUAL NEW CLUBS
- ▲- LAST YEAR ACTUAL NEW CLUBS

GOALS AND ACTUAL MEMBERS CUMULATIVE



- MEMBER GROWTH NET GOAL
- MEMBER GROWTH ACTUAL
- ▲- LAST YEAR MEMBERSHIP ACTUAL

| | |
|-------------------------|------------|
| DROPPED CLUBS: 7 | |
| DROPPED MEMBERS | |
| DECEASED | 77 |
| CLUB CANCELLED | 44 |
| OTHER | 419 |
| TOTAL | 540 |

117 CLUBS OF 305 ADDED 1 OR MORE NEW MEMBERS

[CLICK HERE FOR CUMULATIVE MEMBERSHIP DATA](#)

| GENDER DISTRIBUTION | |
|--|----------------|
| MALE | 5,407 (72.21%) |
| FEMALE | 2,081 (27.79%) |
| NON BINARY | 0 (0.00%) |
| PREFER NOT TO ANSWER | 0 (0.00%) |
| TOTAL FAMILY UNIT MEMBERS | 1,254 |
| FAMILY MEMBERS PAYING HALF DUES | 640 |